

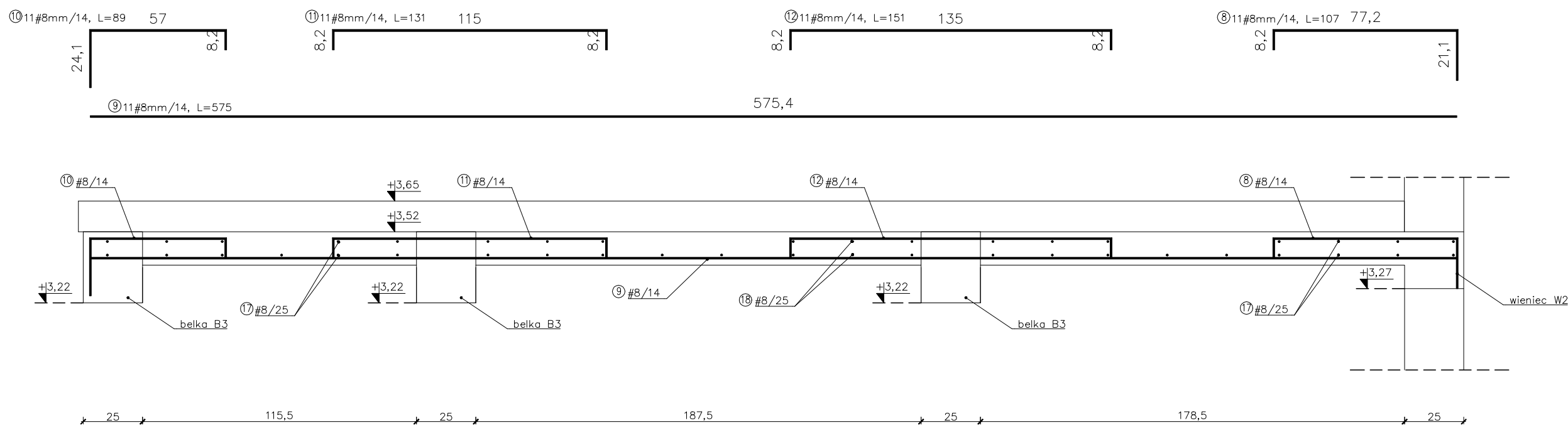
Technical drawing of a square plate with a central hole. The plate has a side length of 25 mm. The central hole has a diameter of 8 mm. The plate is reinforced with 2#12mm reinforcement bars (L=1445) and 2#8mm reinforcement bars. The cross-section view shows a square plate with a side length of 19,2 mm and a central hole with a diameter of 10 mm. The plate is reinforced with 2#85mm/15 reinforcement bars (L=96,8).

Technical drawings of a square plate with a square hole and a square flange.

The left drawing shows a square plate with a square hole. The outer dimensions are 25 mm by 25 mm. The hole dimensions are 25 mm by 25 mm. The plate thickness is 2 mm. The hole is centered, with a distance of 12.16 mm from the outer edge to the inner edge. The hole is labeled with a diameter of 25 mm and a length of 25 mm. The hole is labeled with a diameter of 25 mm and a length of 25 mm.

The right drawing shows a square plate with a square hole and a square flange. The outer dimensions are 25 mm by 25 mm. The hole dimensions are 25 mm by 25 mm. The plate thickness is 2 mm. The hole is centered, with a distance of 12.16 mm from the outer edge to the inner edge. The hole is labeled with a diameter of 25 mm and a length of 25 mm. The hole is labeled with a diameter of 25 mm and a length of 25 mm.

Technical drawing of a square window frame. The overall dimensions are 25 units by 25 units. The frame is reinforced with 2#12mm bars (L=247) on the top and bottom, and 2#12mm bars (L=247) on the left and right. The central opening is 19,2 units by 19,2 units. The frame thickness is 6,15 units. The reinforcement bars are spaced at 5,33 units and 5,08 units. The drawing is labeled with dimensions and reinforcement details.



STAL ZBROJENIOWA: zbrojenie główne A-III (Rb500W),
strzemiona A-I (St3S-b)

OTULENIE ZBROJENIA: 5cm - fundamenty;
2,5cm - pozostałe elementy

STUDIO PROJEKTOWE ANKRA
32-050 Skawina, ul. Korabnicka 5A
tel.: 12 256 10 70, www.studio-ankra.pl

OBIEKT	BUDYNEK OŚRODKA ZDROWIA	
LOKALIZACJA	DZ. NR 1475/1, 1476/9, 1470, 1475/3 TENCZYNEK, GM. KRZESZOWICE	
INWESTOR	GMINA KRZESZOWICE 32-045 KRZESZOWICE UL.GRUNWALDZKA	
STADIUM	PROJEKT BUDOWLANY	
BRANŻA	KONSTRUKCJA	
TEMAT RYSUNKU	ZBROZENIE SCHODÓW KŁAKA PÓŁNOCNA - BIEG GÓRNY	
PROJEKTOWAŁ	MGR INŻ. RADOŚŁAW KURLIT	MAP/0127/ PWOK/14
SPRAWDZIŁ	INŻ. KAZIMIERZ KURLIT	upr. nr 462/59